

HERITAGE VILLAGE MASTER COMMUNITY ASSOCIATION

Color Palette Policy

MAY 3, 2012

The purpose of the color palette policy is to provide a guideline to the architecture committee and residents of Heritage Village Master Association as to the colors and color schemes that are acceptable to the Association for exterior paint.

The new color palette consists of six colors for the base option for the exterior of the main portion of the house and a choice of trim for each of the six colors. The Architecture Committee has the authority to approve an original Heritage Village color scheme or approve one of the color schemes from the color palette without Board approval.

Home owners are not prohibited from requesting a color scheme that is different from the original Heritage Village color scheme or color palette, however, the Architecture Committee must submit the proposed alternative color schemes to the Board for approval prior to approving the home owner's request. The Board should only approve requests for alternative colors if the alternative colors are similar and consistent with the original colors and the color palette.

Home owners should consult the Association Manager, Architecture Committee, or HVMCA website prior to planning their paint selection in order to see samples of the colors that are approved.

HVMCA COLOR PALETTE #1

Large color sample on left represents approved color for main body of house
Small color Samples on the right represent approved trims for this particular color for main body of house



Water Chestnut GLN05

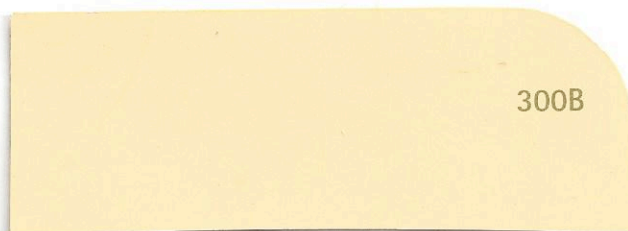
(Color not showing through on print see sample paint chip in palette book)



Crisp Linen White GLGA3



Pinedale Shores 700F-4



Sunporch 300B-4



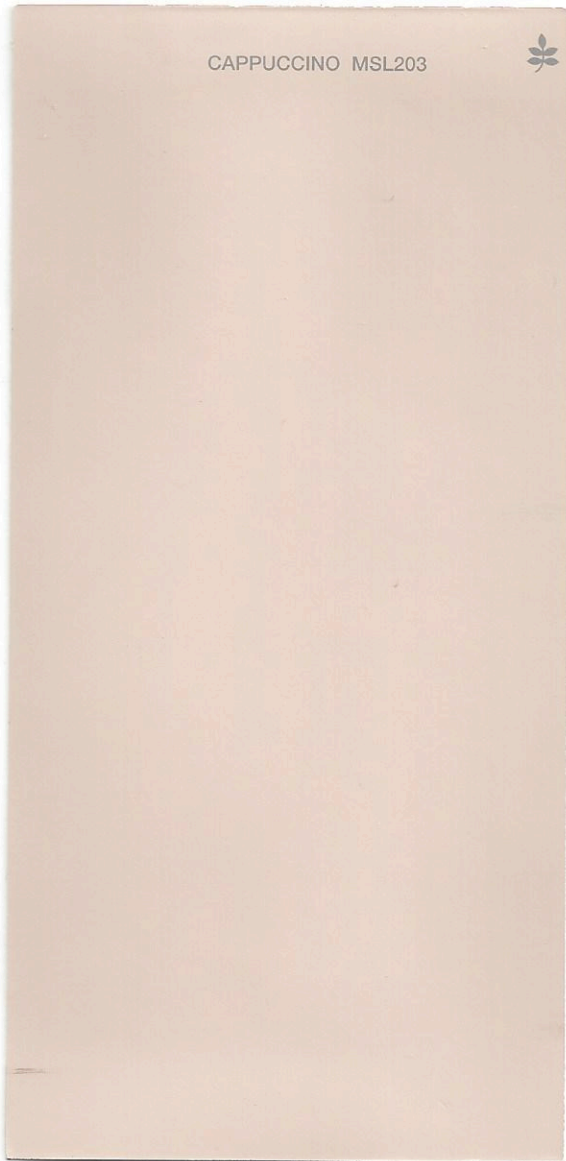
Wooden Cabin 290F-7

Some of these colors may be available in both interior and exterior grades.

It is important to purchase paint that is appropriate for exterior use (i.e. Stucco, Siding, Trim, etc.) when purchasing your paint.

HVMCA COLOR PALETTE #2

Large color sample on left represents approved color for main body of house
Small color Samples on the right represent approved trims for this particular color for main body of house

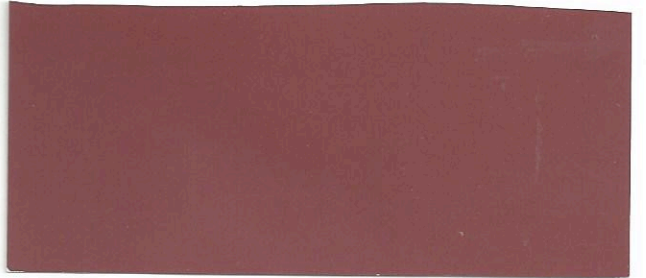


Cappuccino MSL 203

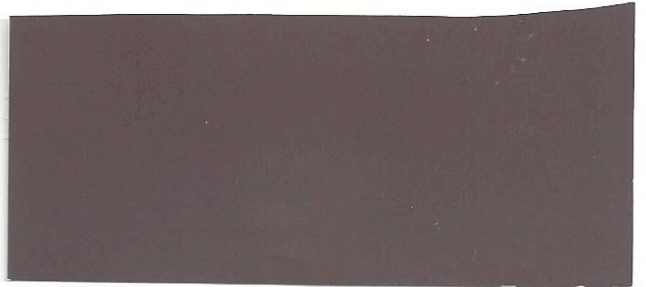
(Color not showing through on print see sample paint chip in palette book)



Parchment White GLC27



Sweet Tea GLO28



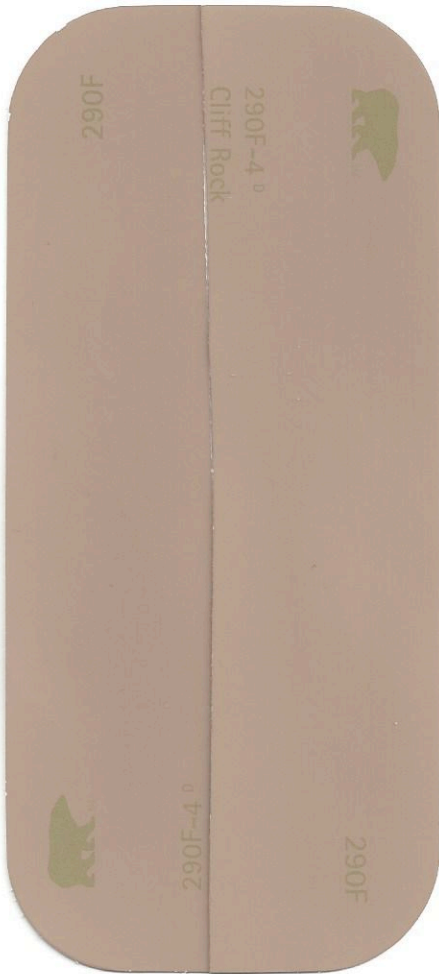
Walnut Bark GLN20

Some of these colors may be available in both interior and exterior grades.

It is important to purchase paint that is appropriate for exterior use (i.e. Stucco, Siding, Trim, etc.) when purchasing your paint.

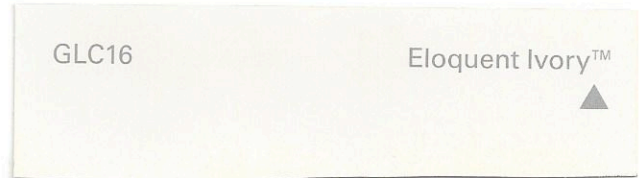
HVMCA COLOR PALETTE #3

Large color sample on left represents approved color for main body of house
Small color Samples on the right represent approved trims for this particular color for main body of house

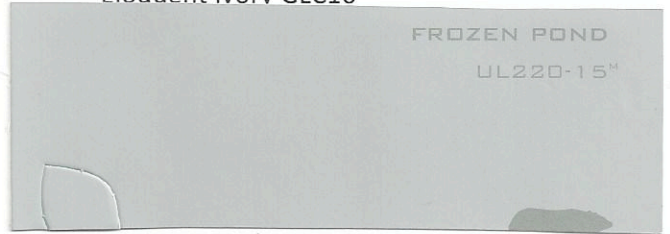


Cliff Rock 290F-4

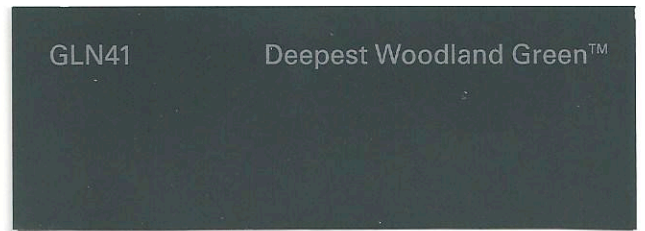
(Color not showing through on print see sample paint chip in palette book)



Eloquent Ivory GLC16



Frozen Pond UL220-15



Deepest Woodland Green
GLN41

Some of these colors may be available in both interior and exterior grades.

It is important to purchase paint that is appropriate for exterior use (i.e. Stucco, Siding, Trim, etc.) when purchasing your paint.

HVMCA COLOR PALETTE #4

Large color sample on left represents approved color for main body of house
Small color Samples on the right represent approved trims for this particular color for main body of house



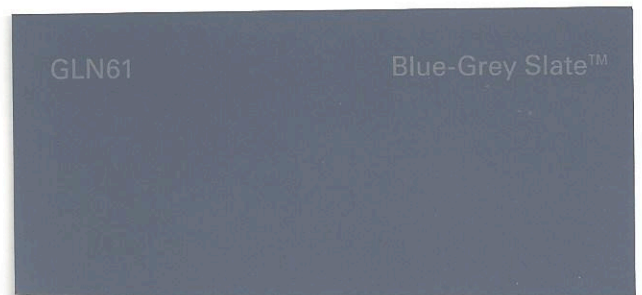
Wood Smoke GLN40



Marshmallow White GLC15



Frozen Pond UL220-1 5



Blue-Gray SlateGLN61

Some of these colors may be available in both interior and exterior grades.

It is important to purchase paint that is appropriate for exterior use (i.e. Stucco, Siding, Trim, etc.) when purchasing your paint.

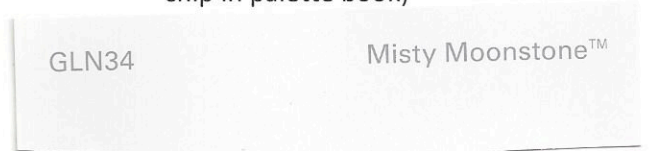
HVMCA COLOR PALETTE #5

Large color sample on left represents approved color for main body of house
Small color Samples on the right represent approved trims for this particular color for main body of house



Pebble Gray GLN50

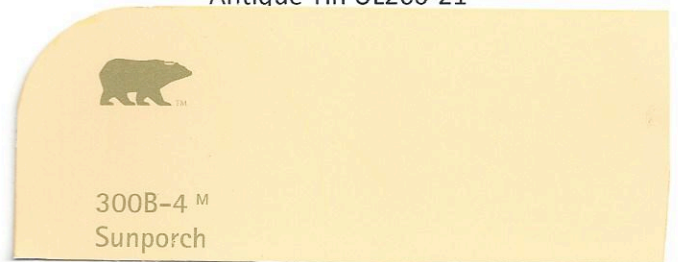
(Color not showing through
on print see sample paint
chip in palette book)



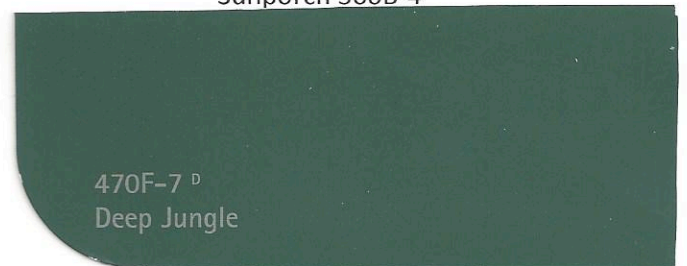
Misty Moonstone GLN34



Antique Tin UL260-21



Sunporch 300B-4



Jungle Green 490F-7

Some of these colors may be available in both interior and exterior grades.

It is important to purchase paint that is appropriate for exterior use (i.e. Stucco, Siding, Trim, etc.) when purchasing your paint.

HVMCA COLOR PALETTE #6

Large color sample on left represents approved color for main body of house
Small color Samples on the right represent approved trims for this particular color for main body of house



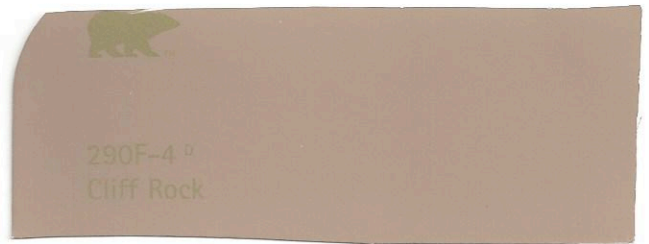
(Color not showing through on print see sample paint chip in palette book)



Crisp Linen White GLC 13



Moonlight Grey GLN 58



Cliff Rock 290F-4



Poppy Seed UL360-23

Some of these colors may be available in both interior and exterior grades.

It is important to purchase paint that is appropriate for exterior use (i.e. Stucco, Siding, Trim, etc.) when purchasing your paint.